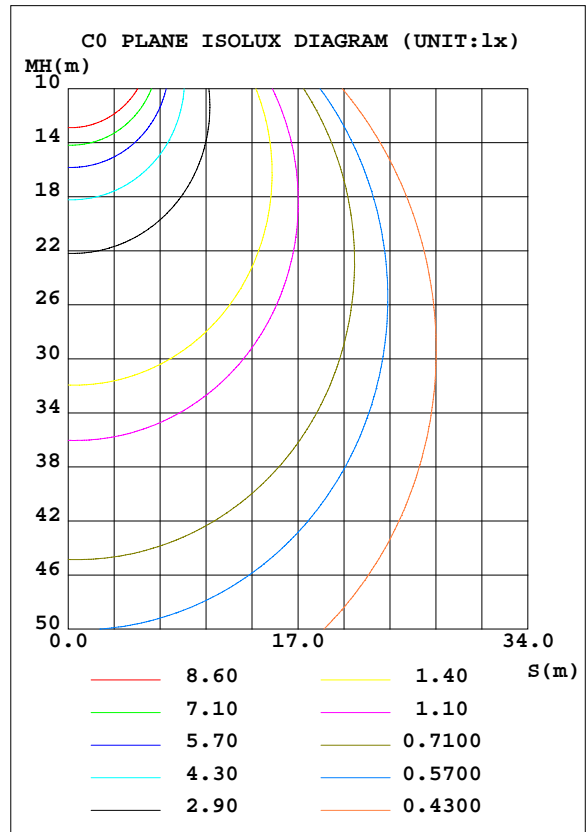
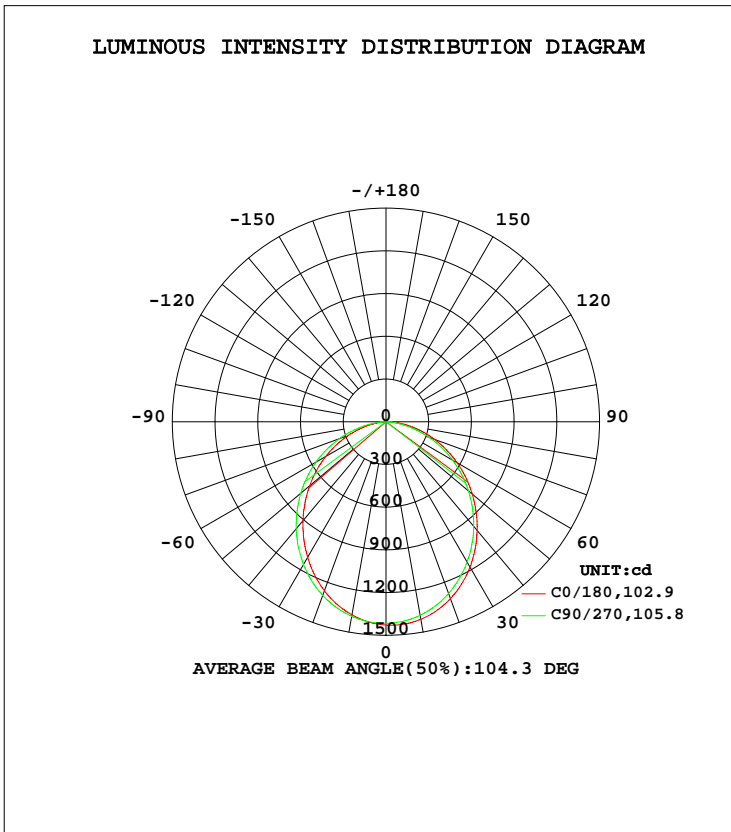


LUMINAIRE PHOTOMETRIC TEST REPORT

Test:U:219.90V I:0.1740A P:37.520W PF:0.9700 Freq:50.00Hz Lamp Flux:3725.85x1 lm		
NAME: MZJ-LED-140A	TYPE: LED 4000K	WEIGHT: N/A
SPEC.: MZJ-LED-140A	DIM.: 1140*67*90MM	SERIAL No.: 13
MFR.:	SUR.: 1.13*0.065	Shielding Angle: N/A

DATA OF LAMP		PHOTOMETRIC DATA			
MODEL	2.44.S2835.4000K	Imax(cd)	1430	S/MH(C0/180)	1.16
NOMINAL POWER(W)	37.52	LOR(%)	100.0	S/MH(C90/270)	1.22
RATED VOLTAGE(V)	220	TOTAL FLUX(lm)	3725.9	η UP, DN(C0-180)	0.1,49.5
NOMINAL FLUX(lm)	3725.85	CIE CLASS	DIRECT	η UP, DN(C180-360)	0.1,50.2
LAMPS INSIDE	1	η up(%)	0.3	CIBSE SHR NOM	1.25
TEST VOLTAGE(V)	220.1	η down(%)	99.7	CIBSE SHR MAX	1.35



C Range: 0 - 360DEG
 C Interval: 30.0DEG
 Test Speed: HIGH
 Temperature:25.3DEG
 Operators:WEIJIE
 Test Date:2023-12-11

γ Range: 0 - 180DEG
 γ Interval: 0.5DEG
 Test System:EVERFINE GO-2000A_V1 SYSTEM V2.00.446
 Humidity:65.0%
 Test Distance:8.600m [K=1.0000]
 Remarks:

ZONAL FLUX DIAGRAM

ZONAL FLUX DIAGRAM:

γ	C0	C45	C90	C135	C180	C225	C270	C315	γ	Φ zone	Φ total	%lum, lamp
10	1409	1405	1380	1356	1377	1370	1387	1409	0- 10	133.9	133.9	3.59,3.59
20	1322	1325	1284	1237	1264	1260	1299	1337	10- 20	379.3	513.2	13.8,13.8
30	1179	1189	1139	1073	1101	1102	1159	1209	20- 30	562.8	1076	28.9,28.9
40	996.4	1012	957.5	880.3	907.0	912.2	981.8	1037	30- 40	659.9	1736	46.6,46.6
50	791.6	811.9	757.0	674.5	699.8	706.8	780.3	837.7	40- 50	663.8	2400	64.4,64.4
60	577.3	597.6	542.3	461.0	489.7	494.4	567.3	625.5	50- 60	582.4	2982	80,80
70	362.9	378.8	321.5	250.1	282.4	282.8	348.4	408.3	60- 70	431.8	3414	91.6,91.6
80	162.9	170.2	116.1	67.80	97.47	92.57	139.5	196.2	70- 80	239.5	3653	98.1,98.1
90	11.44	13.98	0.2497	0.3006	0.2590	0.2428	1.421	28.54	80- 90	63.05	3716	99.7,99.7
100	0.4251	0.4554	0.5320	0.5778	0.5227	0.5063	0.4018	0.3698	90-100	1.457	3718	99.8,99.8
110	0.7258	0.7951	0.9574	0.9430	0.8787	0.8530	0.8224	0.7143	100-110	0.6827	3719	99.8,99.8
120	1.091	1.190	1.401	1.329	1.235	1.223	1.257	1.119	110-120	1.018	3720	99.8,99.8
130	1.456	1.565	1.790	1.701	1.582	1.595	1.678	1.535	120-130	1.270	3721	99.9,99.9
140	1.835	1.935	2.136	2.046	1.924	1.958	2.053	1.916	130-140	1.383	3722	99.9,99.9
150	2.195	2.275	2.451	2.388	2.271	2.302	2.358	2.291	140-150	1.339	3724	99.9,99.9
160	2.598	2.596	2.705	2.677	2.673	2.654	2.672	2.635	150-160	1.148	3725	100,100
170	2.945	2.823	2.853	2.866	2.973	2.873	2.871	2.866	160-170	0.7832	3726	100,100
180	3.065	2.957	2.963	2.938	3.093	2.945	2.950	2.945	170-180	0.2777	3726	100,100
DEG	LUMINOUS INTENSITY:cd									UNIT:lm		

Conical surface Flux(90deg): 2072.9 lm

%lum = 55.6%
%lamp = 55.6%

Conical surface Flux(120deg): 2982.1 lm

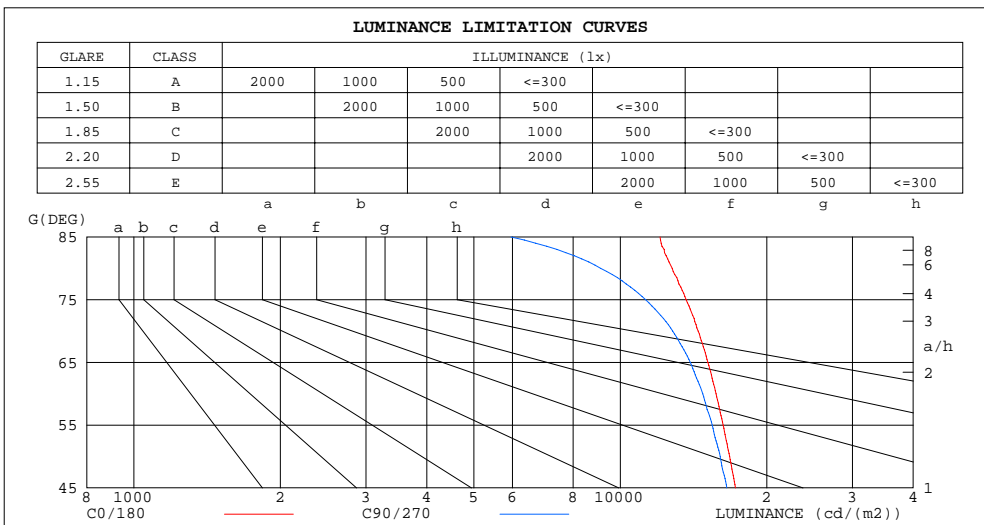
%lum = 80.0%
%lamp = 80.0%

C Range: 0 - 360DEG
C Interval: 30.0DEG
Test Speed: HIGH
Temperature:25.3DEG
Operators:WEIJIE
Test Date:2023-12-11

γ Range: 0 - 180DEG
γ Interval: 0.5DEG
Test System:EVERFINE GO-2000A_V1 SYSTEM V2.00.446
Humidity:65.0%
Test Distance:8.600m [K=1.0000]
Remarks:

LUMINANCE LIMITATION CURVES

Test:U:219.90V I:0.1740A P:37.520W PF:0.9700 Freq:50.00Hz Lamp Flux:3725.85x1 lm		
NAME: MZJ-LED-140A	TYPE: LED 4000K	WEIGHT: N/A
SPEC.: MZJ-LED-140A	DIM.: 1140*67*90MM	SERIAL No.: 13
MFR.:	SUR.: 1.13*0.065	Shielding Angle: N/A



LUMINANCE cd/(m2)		
G (DEG)	C0/180	C90/270
85	12069	5959
80	12782	9108
75	13658	11274
70	14455	12808
65	15137	13927
60	15730	14778
55	16269	15454
50	16779	16045
45	17249	16559

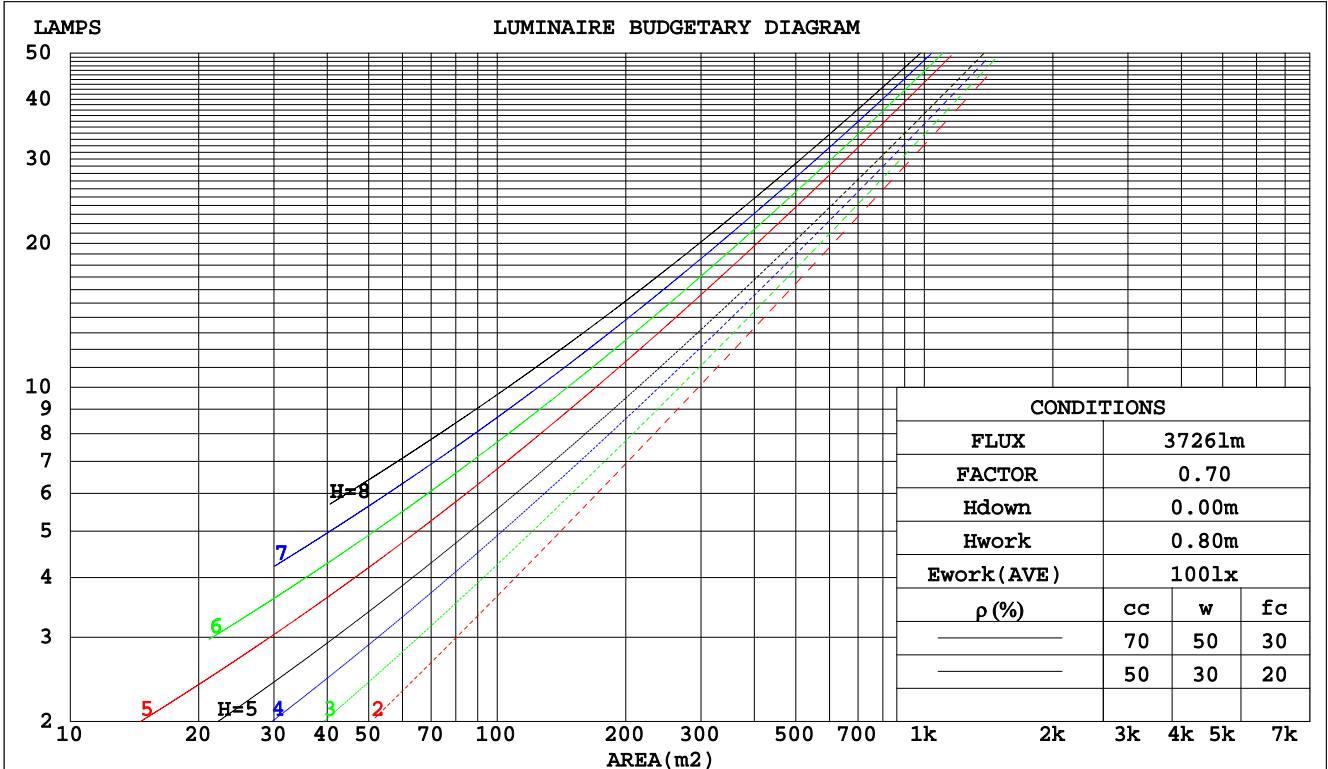
C Range: 0 - 360DEG
 C Interval: 30.0DEG
 Test Speed: HIGH
 Temperature: 25.3DEG
 Operators: WEIJIE
 Test Date: 2023-12-11

γ Range: 0 - 180DEG
 γ Interval: 0.5DEG
 Test System: EVERFINE GO-2000A_V1 SYSTEM V2.00.446
 Humidity: 65.0%
 Test Distance: 8.600m [K=1.0000]
 Remarks:

CU AND LUMINAIRE BUDGETARY ESTIMATE DIAGRAM

Test:U:219.90V I:0.1740A P:37.520W PF:0.9700 Freq:50.00Hz Lamp Flux:3725.85x1 lm		
NAME: MZJ-LED-140A	TYPE: LED 4000K	WEIGHT: N/A
SPEC.: MZJ-LED-140A	DIM.: 1140*67*90MM	SERIAL No.: 13
MFR.:	SUR.: 1.13*0.065	Shielding Angle: N/A

pcc	80%			70%			50%			30%			10%			0
	50%	30%	10%	50%	30%	10%	50%	30%	10%	50%	30%	10%	50%	30%	10%	
pw																
pfc	20%			20%			20%			20%			20%			0
RCR	RCR:Room Cavity Ratio															
	Coefficients of Utilization(CU)															
0.0	1.19	1.19	1.19	1.16	1.16	1.16	1.11	1.11	1.11	1.06	1.06	1.06	1.02	1.02	1.02	.00
1.0	1.04	1.00	.96	1.02	.98	.95	.98	.95	.92	.94	.91	.89	.90	.88	.86	.84
2.0	.91	.84	.79	.89	.83	.78	.86	.80	.76	.82	.78	.74	.79	.76	.72	.70
3.0	.80	.72	.66	.79	.71	.65	.76	.69	.64	.73	.67	.63	.70	.66	.62	.59
4.0	.71	.63	.56	.70	.62	.55	.67	.60	.55	.65	.59	.54	.63	.58	.53	.51
5.0	.64	.55	.48	.63	.54	.48	.60	.53	.47	.58	.52	.47	.57	.51	.46	.44
6.0	.57	.49	.42	.57	.48	.42	.55	.47	.42	.53	.46	.41	.51	.45	.41	.39
7.0	.52	.43	.37	.51	.43	.37	.50	.42	.37	.48	.42	.37	.47	.41	.36	.34
8.0	.48	.39	.33	.47	.39	.33	.46	.38	.33	.44	.38	.33	.43	.37	.33	.31
9.0	.44	.36	.30	.43	.35	.30	.42	.35	.30	.41	.34	.30	.40	.34	.30	.28
10.0	.40	.33	.27	.40	.32	.27	.39	.32	.27	.38	.32	.27	.37	.31	.27	.25



C Range: 0 - 360DEG
 C Interval: 30.0DEG
 Test Speed: HIGH
 Temperature: 25.3DEG
 Operators: WEIJIE
 Test Date: 2023-12-11

γ Range: 0 - 180DEG
 γ Interval: 0.5DEG
 Test System: EVERFINE GO-2000A_V1 SYSTEM V2.00.446
 Humidity: 65.0%
 Test Distance: 8.600m [K=1.0000]
 Remarks:

WEC AND CCEC

Test:U:219.90V I:0.1740A P:37.520W PF:0.9700 Freq:50.00Hz		
Lamp Flux:3725.85x1 lm		
NAME: MZJ-LED-140A	TYPE: LED 4000K	WEIGHT: N/A
SPEC.: MZJ-LED-140A	DIM.: 1140*67*90MM	SERIAL No.: 13
MFR.:	SUR.: 1.13*0.065	Shielding Angle: N/A

ρcc	80%			70%			50%			30%			10%			0
ρw	50%	30%	10%	50%	30%	10%	50%	30%	10%	50%	30%	10%	50%	30%	10%	0
ρfc	20%			20%			20%			20%			20%			0
RCR	RCR:Room Cavity Ratio						Wall Exitance Coefficients(WEC)									
0.0																
1.0	.302	.171	.054	.294	.168	.053	.281	.161	.051	.269	.155	.050	.257	.149	.048	
2.0	.285	.156	.048	.279	.153	.047	.267	.148	.046	.256	.144	.045	.246	.139	.044	
3.0	.264	.141	.042	.259	.139	.042	.248	.135	.041	.239	.131	.040	.230	.127	.039	
4.0	.244	.127	.037	.239	.125	.037	.230	.122	.036	.222	.119	.036	.214	.116	.035	
5.0	.226	.115	.033	.222	.114	.033	.214	.111	.033	.206	.109	.032	.199	.106	.032	
6.0	.210	.105	.030	.206	.104	.030	.199	.102	.030	.192	.100	.029	.186	.098	.029	
7.0	.196	.097	.027	.192	.096	.027	.186	.094	.027	.180	.092	.027	.174	.090	.027	
8.0	.183	.090	.025	.180	.089	.025	.174	.087	.025	.169	.086	.025	.164	.084	.024	
9.0	.172	.083	.023	.169	.082	.023	.164	.081	.023	.159	.080	.023	.154	.078	.023	
10.0	.162	.078	.022	.159	.077	.021	.154	.076	.021	.150	.074	.021	.146	.073	.021	

ρcc	80%			70%			50%			30%			10%			0
ρw	50%	30%	10%	50%	30%	10%	50%	30%	10%	50%	30%	10%	50%	30%	10%	0
ρfc	20%			20%			20%			20%			20%			0
RCR	RCR:Room Cavity Ratio						Ceiling Cavity Exitance Coefficients(CCEC)									
0.0	.192	.192	.192	.164	.164	.164	.112	.112	.112	.064	.064	.064	.021	.021	.021	
1.0	.182	.158	.137	.155	.136	.118	.106	.093	.082	.061	.054	.047	.020	.017	.015	
2.0	.173	.134	.101	.148	.115	.087	.102	.080	.061	.059	.046	.036	.019	.015	.012	
3.0	.165	.116	.077	.142	.100	.067	.097	.070	.047	.056	.041	.028	.018	.013	.009	
4.0	.158	.103	.061	.135	.089	.053	.093	.062	.037	.054	.036	.022	.017	.012	.007	
5.0	.150	.092	.050	.129	.080	.043	.089	.056	.031	.051	.033	.018	.017	.011	.006	
6.0	.143	.084	.042	.123	.073	.036	.085	.051	.026	.049	.030	.015	.016	.010	.005	
7.0	.136	.077	.036	.117	.067	.031	.081	.047	.022	.047	.028	.013	.015	.009	.004	
8.0	.130	.071	.031	.112	.062	.027	.077	.043	.019	.045	.026	.011	.015	.008	.004	
9.0	.124	.066	.027	.107	.058	.024	.074	.040	.017	.043	.024	.010	.014	.008	.003	
10.0	.118	.062	.025	.102	.054	.021	.071	.038	.015	.041	.022	.009	.013	.007	.003	

C Range: 0 - 360DEG
 C Interval: 30.0DEG
 Test Speed: HIGH
 Temperature:25.3DEG
 Operators:WEIJIE
 Test Date:2023-12-11

γ Range: 0 - 180DEG
 γ Interval: 0.5DEG
 Test System:EVERFINE GO-2000A_V1 SYSTEM V2.00.446
 Humidity:65.0%
 Test Distance:8.600m [K=1.0000]
 Remarks:

UGR(Unified Glare Rating) Table

Test:U:219.90V I:0.1740A P:37.520W PF:0.9700 Freq:50.00Hz Lamp Flux:3725.85x1 lm		
NAME: MZJ-LED-140A	TYPE: LED 4000K	WEIGHT: N/A
SPEC.: MZJ-LED-140A	DIM.: 1140*67*90MM	SERIAL No.: 13
MFR.:	SUR.: 1.13*0.065	Shielding Angle: N/A

ceiling/cavity	0.7	0.7	0.5	0.5	0.3	0.7	0.7	0.5	0.5	0.3
walls	0.5	0.3	0.5	0.3	0.3	0.5	0.3	0.5	0.3	0.3
working plane	0.2	0.2	0.2	0.2	0.2	0.2	0.2	0.2	0.2	0.2
Room dimensions	Viewed crosswise					Viewed endwise				
x = 2H y = 2H	22.8	24.3	23.1	24.5	24.7	22.6	24.1	22.8	24.3	24.5
3H	24.3	25.7	24.6	25.9	26.2	24.0	25.3	24.3	25.6	25.8
4H	24.9	26.2	25.2	26.5	26.8	24.5	25.8	24.8	26.0	26.3
6H	25.4	26.6	25.7	26.9	27.2	24.8	26.0	25.1	26.3	26.6
8H	25.6	26.8	25.9	27.0	27.3	24.9	26.0	25.2	26.3	26.6
12H	25.7	26.8	26.0	27.1	27.4	24.9	26.0	25.2	26.3	26.6
4H 2H	23.4	24.7	23.7	25.0	25.2	23.2	24.6	23.6	24.8	25.1
3H	25.2	26.3	25.5	26.6	26.9	24.9	26.0	25.2	26.3	26.6
4H	25.9	27.0	26.3	27.3	27.6	25.5	26.5	25.9	26.9	27.2
6H	26.5	27.5	26.9	27.8	28.2	25.9	26.9	26.3	27.2	27.6
8H	26.8	27.6	27.2	28.0	28.4	26.1	26.9	26.5	27.3	27.7
12H	26.9	27.7	27.4	28.1	28.5	26.1	26.9	26.6	27.3	27.7
8H 4H	26.2	27.1	26.6	27.5	27.8	25.8	26.7	26.3	27.1	27.5
6H	27.0	27.7	27.5	28.1	28.6	26.5	27.2	26.9	27.6	28.0
8H	27.4	28.0	27.8	28.4	28.9	26.7	27.3	27.1	27.7	28.2
12H	27.6	28.2	28.1	28.6	29.1	26.8	27.3	27.3	27.8	28.3
12H 4H	26.2	27.0	26.7	27.4	27.8	25.9	26.7	26.3	27.1	27.5
6H	27.1	27.7	27.5	28.1	28.6	26.6	27.2	27.0	27.6	28.1
8H	27.5	28.0	28.0	28.5	29.0	26.8	27.4	27.3	27.8	28.3
Variations with the observer position at spacings(CIE Pub.117):										
S = 1.0H	+ 0.2 / - 0.2					+ 0.2 / - 0.2				
1.5H	+ 0.2 / - 0.3					+ 0.2 / - 0.4				
2.0H	+ 0.1 / - 0.3					+ 0.2 / - 0.4				

CIE Pub.117, 3726 lm Total Lamp Luminous Flux Corrected (8log(F/F0) = 4.6)
Area: 0.0734 m2

C Range: 0 - 360DEG
C Interval: 30.0DEG
Test Speed: HIGH
Temperature:25.3DEG
Operators:WEIJIE
Test Date:2023-12-11

γ Range: 0 - 180DEG
γ Interval: 0.5DEG
Test System:EVERFINE GO-2000A_V1 SYSTEM V2.00.446
Humidity:65.0%
Test Distance:8.600m [K=1.0000]
Remarks:

UTILIZATION FACTORS TABLE

Test:U:219.90V I:0.1740A P:37.520W PF:0.9700 Freq:50.00Hz Lamp Flux:3725.85x1 lm		
NAME: MZJ-LED-140A	TYPE: LED 4000K	WEIGHT: N/A
SPEC.: MZJ-LED-140A	DIM.: 1140*67*90MM	SERIAL No.: 13
MFR.:	SUR.: 1.13*0.065	Shielding Angle: N/A

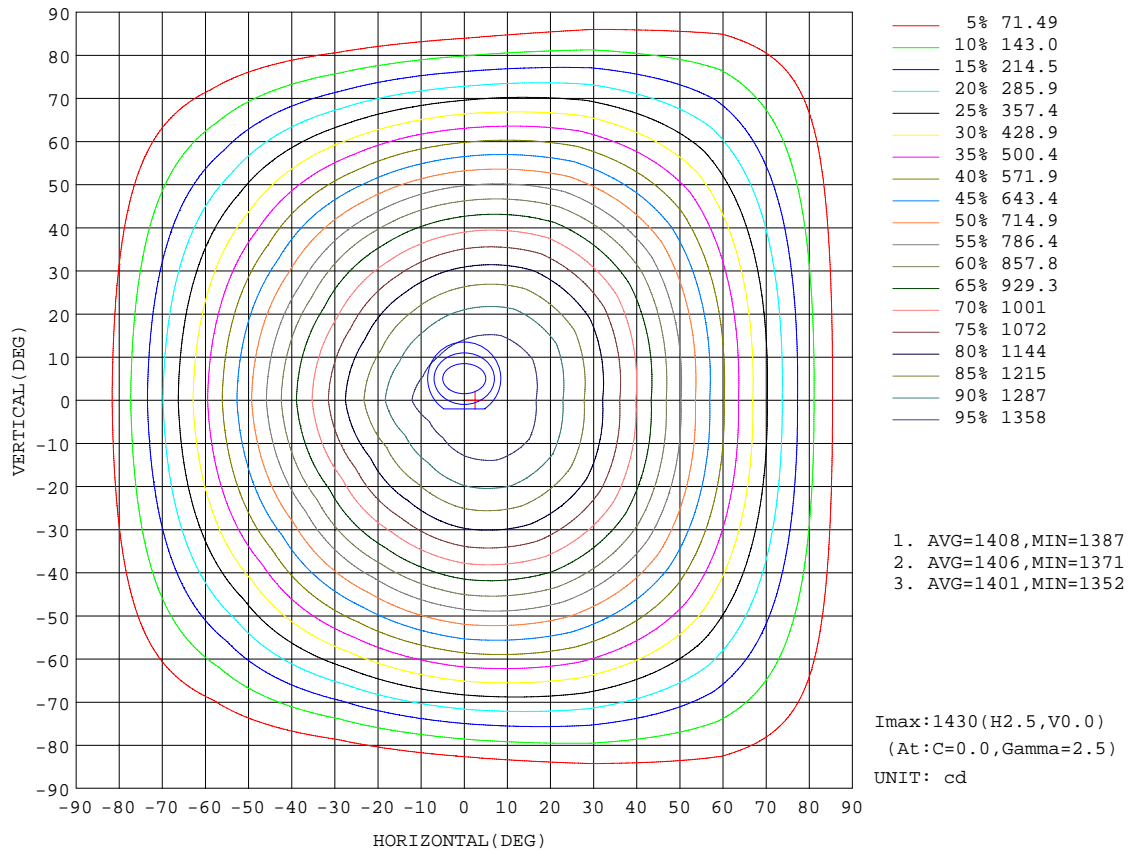
REFLECTANCE										
Ceiling	0.8	0.8	0.8	0.7	0.7	0.7	0.5	0.5	0.5	0
Walls	0.7	0.5	0.3	0.7	0.5	0.3	0.7	0.5	0.3	0
Working plane	0.2	0.2	0.2	0.2	0.2	0.2	0.2	0.2	0.2	0
ROOM INDEX	UTILIZATION FACTORS(PERCENT) k(RI) x RCR = 5									
k = 0.60	59	47	40	58	47	40	57	47	40	34
0.80	69	57	50	68	57	50	66	56	49	43
1.00	77	66	59	76	66	59	74	67	58	51
1.25	84	74	67	83	73	66	80	72	66	58
1.50	89	79	72	87	78	72	84	77	71	63
2.00	96	87	81	94	86	80	90	84	79	71
2.50	99	92	86	97	90	85	94	88	83	75
3.00	103	96	91	101	94	90	96	91	87	79
4.00	107	101	97	104	99	95	100	96	92	84
5.00	109	104	100	106	102	99	102	99	96	86
ROOM INDEX	UF(total)									Direct
According to DIN EN 13032-2 2004			Suspended				SHRNOM = 1.25			

C Range: 0 - 360DEG
 C Interval: 30.0DEG
 Test Speed: HIGH
 Temperature:25.3DEG
 Operators:WEIJIE
 Test Date:2023-12-11

γ Range: 0 - 180DEG
 γ Interval: 0.5DEG
 Test System:EVERFINE GO-2000A_V1 SYSTEM V2.00.446
 Humidity:65.0%
 Test Distance:8.600m [K=1.0000]
 Remarks:

ISOCANDELA DIAGRAM

Test:U:219.90V I:0.1740A P:37.520W PF:0.9700 Freq:50.00Hz Lamp Flux:3725.85x1 lm		
NAME: MZJ-LED-140A	TYPE: LED 4000K	WEIGHT: N/A
SPEC.: MZJ-LED-140A	DIM.: 1140*67*90MM	SERIAL No.: 13
MFR.:	SUR.: 1.13*0.065	Shielding Angle: N/A



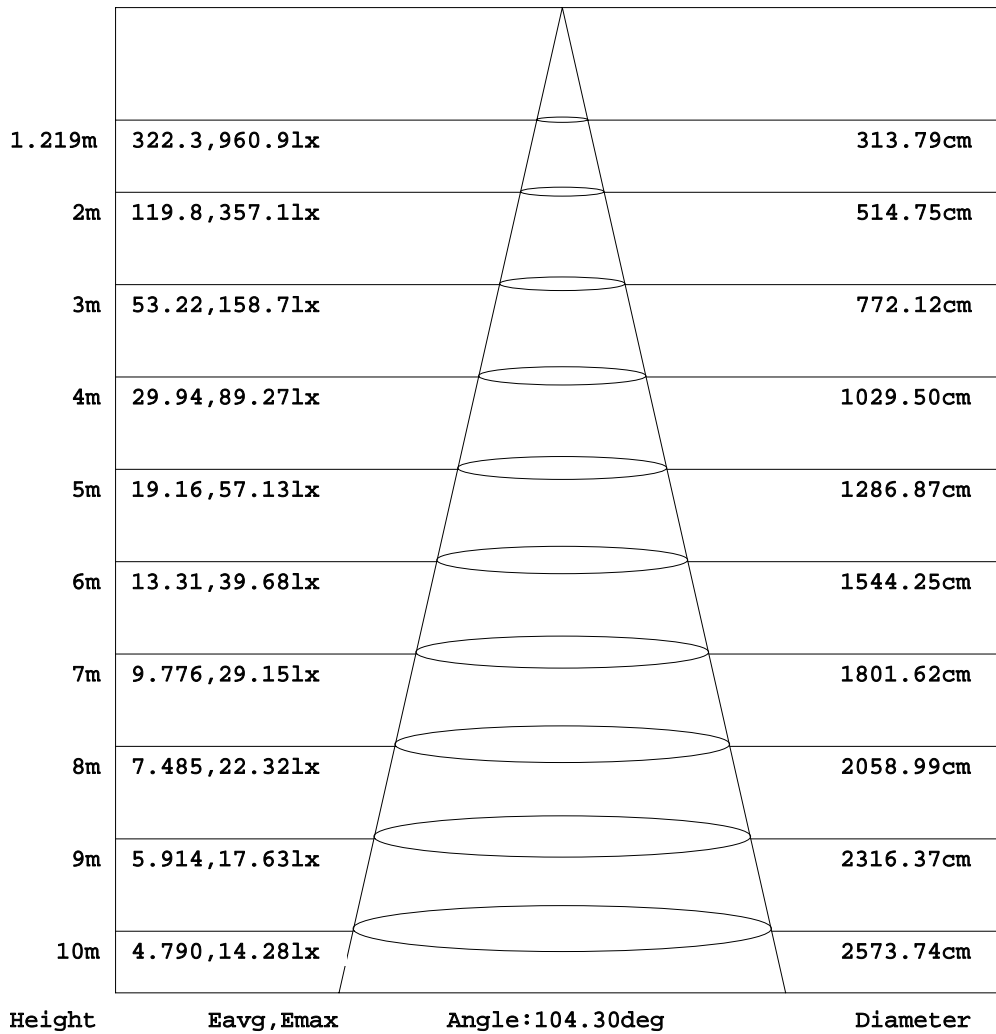
C Range: 0 - 360DEG
 C Interval: 30.0DEG
 Test Speed: HIGH
 Temperature:25.3DEG
 Operators:WEIJIE
 Test Date:2023-12-11

γ Range: 0 - 180DEG
 γ Interval: 0.5DEG
 Test System:EVERFINE GO-2000A_V1 SYSTEM V2.00.446
 Humidity:65.0%
 Test Distance:8.600m [K=1.0000]
 Remarks:

AAI Figure

Test:U:219.90V I:0.1740A P:37.520W PF:0.9700 Freq:50.00Hz Lamp Flux:3725.85x1 lm		
NAME: MZJ-LED-140A	TYPE: LED 4000K	WEIGHT: N/A
SPEC.: MZJ-LED-140A	DIM.: 1140*67*90MM	SERIAL No.: 13
MFR.:	SUR.: 1.13*0.065	Shielding Angle: N/A

Flux out:2556 lm



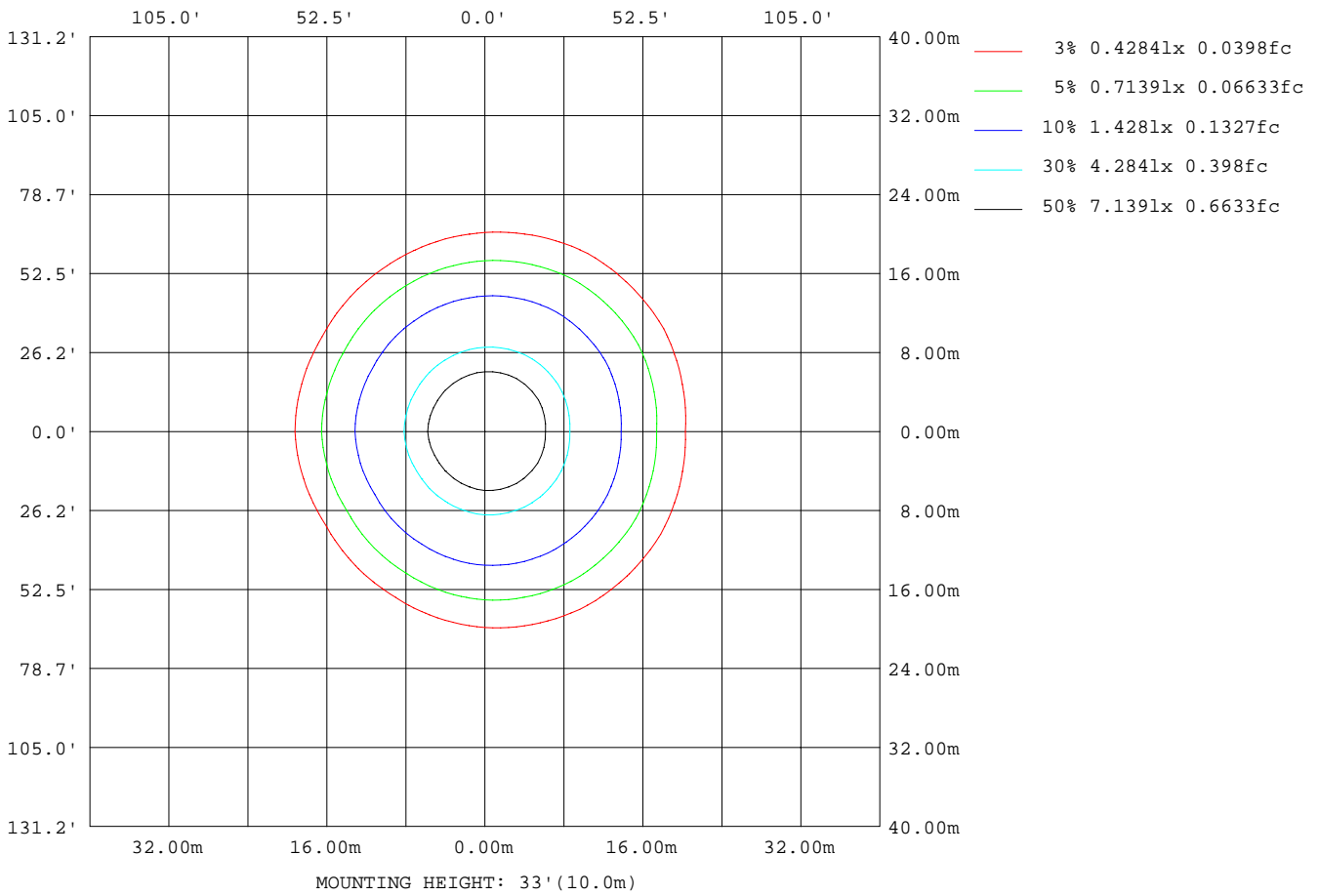
Note:The Curves indicate the illuminated area and the average illumination when the luminaire is at different distance.

C Range: 0 - 360DEG
C Interval: 30.0DEG
Test Speed: HIGH
Temperature:25.3DEG
Operators:WEIJIE
Test Date:2023-12-11

γ Range: 0 - 180DEG
γ Interval: 0.5DEG
Test System:EVERFINE GO-2000A_V1 SYSTEM V2.00.446
Humidity:65.0%
Test Distance:8.600m [K=1.0000]
Remarks:

ISOLUX DIAGRAM

Test:U:219.90V I:0.1740A P:37.520W PF:0.9700 Freq:50.00Hz Lamp Flux:3725.85x1 lm		
NAME: MZJ-LED-140A	TYPE: LED 4000K	WEIGHT: N/A
SPEC.: MZJ-LED-140A	DIM.: 1140*67*90MM	SERIAL No.: 13
MFR.:	SUR.: 1.13*0.065	Shielding Angle: N/A



C Range: 0 - 360DEG
 C Interval: 30.0DEG
 Test Speed: HIGH
 Temperature:25.3DEG
 Operators:WEIJIE
 Test Date:2023-12-11

γ Range: 0 - 180DEG
 γ Interval: 0.5DEG
 Test System:EVERFINE GO-2000A_V1 SYSTEM V2.00.446
 Humidity:65.0%
 Test Distance:8.600m [K=1.0000]
 Remarks:

LED Avg.L Report

Test:U:219.90V I:0.1740A P:37.520W PF:0.9700 Freq:50.00Hz Lamp Flux:3725.85x1 lm		
NAME: MZJ-LED-140A	TYPE: LED 4000K	WEIGHT: N/A
SPEC.: MZJ-LED-140A	DIM.: 1140*67*90MM	SERIAL No.: 13
MFR.:	SUR.: 1.13*0.065	Shielding Angle: N/A

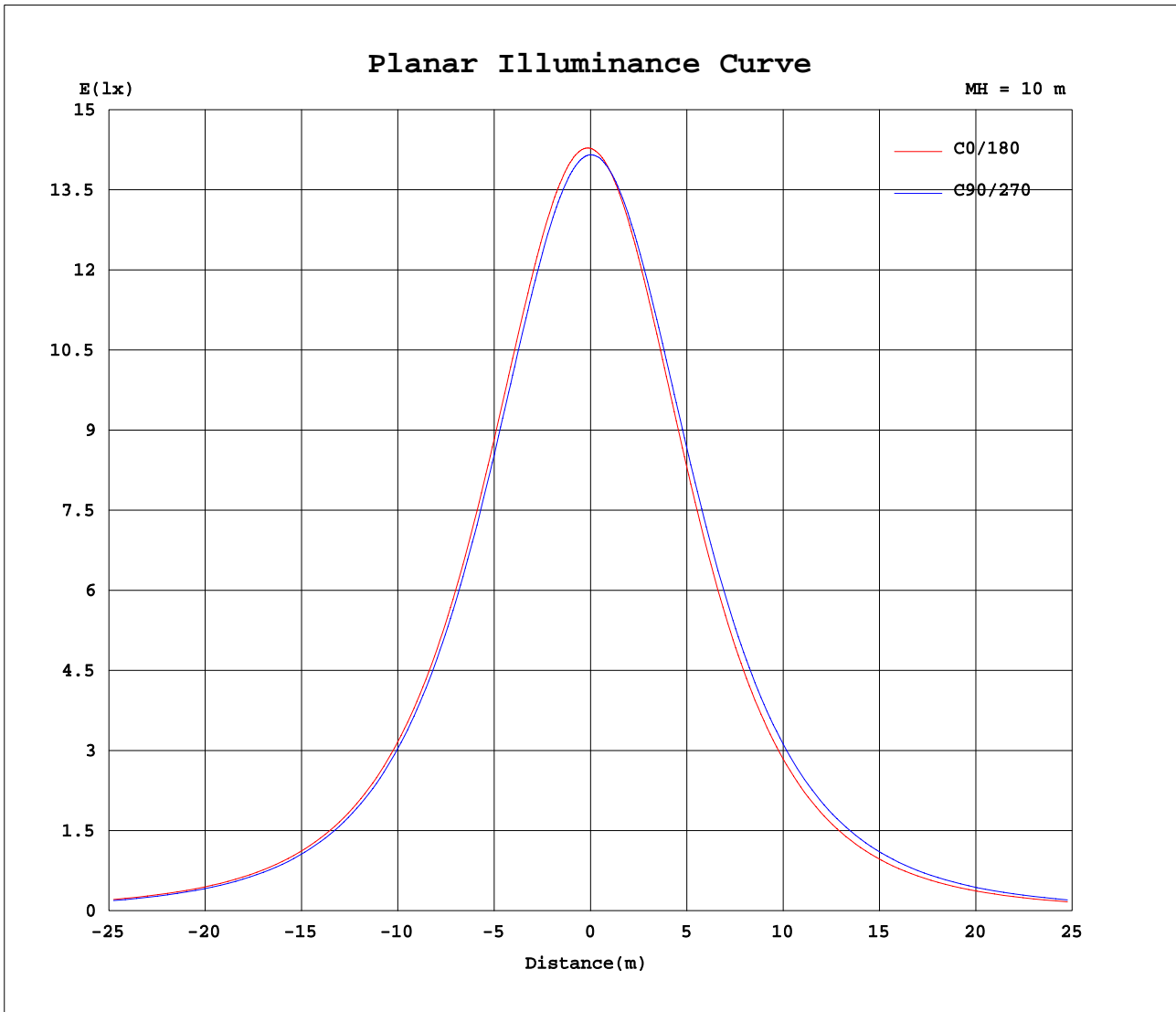
AvgL	cd/m2
L_0~180(65)av	13764
L_0~180(75)av	11704
L_0~180(85)av	7978
L_90~270(65)av	14341
L_90~270(75)av	11973
L_90~270(85)av	7202
L_45(65)av	14083
L_45(75)av	11945
L_45(85)av	8394

Standard: GB/T 29293-2012

C Range: 0 - 360DEG
 C Interval: 30.0DEG
 Test Speed: HIGH
 Temperature:25.3DEG
 Operators:WEIJIE
 Test Date:2023-12-11

γ Range: 0 - 180DEG
 γ Interval: 0.5DEG
 Test System:EVERFINE GO-2000A_V1 SYSTEM V2.00.446
 Humidity:65.0%
 Test Distance:8.600m [K=1.0000]
 Remarks:

Planar Illuminance Curve



C Range: 0 - 360DEG
 C Interval: 30.0DEG
 Test Speed: HIGH
 Temperature: 25.3DEG
 Operators: WEIJIE
 Test Date: 2023-12-11

γ Range: 0 - 180DEG
 γ Interval: 0.5DEG
 Test System: EVERFINE GO-2000A_V1 SYSTEM V2.00.446
 Humidity: 65.0%
 Test Distance: 8.600m [K=1.0000]
 Remarks:

LUMINOUS DISTRIBUTION INTENSITY DATA

Test:U:219.90V I:0.1740A P:37.520W PF:0.9700 Freq:50.00Hz Lamp Flux:3725.85x1 lm		
NAME: MZJ-LED-140A	TYPE: LED 4000K	WEIGHT: N/A
SPEC.: MZJ-LED-140A	DIM.: 1140*67*90MM	SERIAL No.: 13
MFR.:	SUR.: 1.13*0.065	Shielding Angle: N/A

Table--1

UNIT: cd

C(DEG)\ γ (DEG)	0	30	60	90	120	150	180	210	240	270	300	330							
0	1428	1423	1419	1416	1414	1417	1428	1423	1419	1416	1414	1417							
5	1427	1425	1417	1406	1394	1393	1411	1404	1404	1409	1418	1424							
10	1409	1411	1399	1380	1358	1353	1377	1368	1373	1387	1405	1413							
15	1374	1379	1366	1339	1308	1298	1328	1317	1327	1350	1376	1386							
20	1322	1333	1316	1284	1244	1230	1264	1252	1268	1299	1332	1343							
25	1257	1272	1254	1217	1169	1151	1187	1175	1196	1234	1274	1285							
30	1179	1198	1181	1139	1084	1061	1101	1089	1115	1159	1203	1215							
35	1092	1112	1096	1051	993	965	1006	994	1025	1074	1122	1132							
40	996	1020	1005	958	895	865	907	895	929	982	1032	1041							
45	895	922	907	859	794	763	804	793	829	883	936	942							
50	792	819	805	757	690	659	700	688	726	780	835	840							
55	685	713	699	651	583	553	595	581	620	675	730	735							
60	577	605	590	542	475	447	490	476	513	567	623	628							
65	470	496	480	432	367	342	384	371	404	458	513	520							
70	363	387	370	322	261	239	282	269	297	348	403	413							
75	259	281	262	214	160	145	185	172	194	241	294	306							
80	163	180	160	116	73.6	62.0	97.5	83.7	101	139	189	203							
85	77.2	91.4	71.9	38.1	9.20	3.77	24.9	15.1	27.0	54.0	96.3	110							
90	11.4	19.9	8.04	0.25	0.27	0.33	0.26	0.25	0.24	1.42	23.1	33.9							
95	0.32	0.35	0.30	0.37	0.38	0.46	0.37	0.36	0.36	0.25	0.27	0.28							
100	0.43	0.48	0.43	0.53	0.54	0.62	0.52	0.50	0.51	0.40	0.40	0.34							
105	0.57	0.62	0.61	0.74	0.72	0.78	0.69	0.66	0.68	0.59	0.57	0.49							
110	0.73	0.79	0.80	0.96	0.93	0.96	0.88	0.84	0.87	0.82	0.77	0.66							
115	0.90	0.97	1.03	1.18	1.12	1.14	1.06	1.01	1.06	1.04	0.98	0.85							
120	1.09	1.15	1.23	1.40	1.34	1.32	1.23	1.19	1.25	1.26	1.19	1.04							
125	1.27	1.34	1.42	1.61	1.53	1.50	1.41	1.38	1.45	1.47	1.41	1.25							
130	1.46	1.51	1.62	1.79	1.71	1.69	1.58	1.55	1.64	1.68	1.61	1.46							
135	1.65	1.71	1.79	1.96	1.90	1.86	1.75	1.72	1.83	1.86	1.80	1.65							
140	1.83	1.90	1.97	2.14	2.07	2.03	1.92	1.90	2.01	2.05	1.99	1.84							
145	1.99	2.08	2.13	2.29	2.22	2.18	2.09	2.05	2.18	2.21	2.16	2.04							
150	2.20	2.27	2.28	2.45	2.40	2.37	2.27	2.25	2.36	2.36	2.34	2.25							
155	2.39	2.46	2.44	2.58	2.55	2.54	2.47	2.43	2.55	2.53	2.50	2.44							
160	2.60	2.62	2.57	2.70	2.68	2.68	2.67	2.59	2.72	2.67	2.65	2.62							
165	2.80	2.78	2.72	2.80	2.80	2.80	2.83	2.73	2.84	2.80	2.78	2.76							
170	2.94	2.85	2.80	2.85	2.84	2.89	2.97	2.82	2.93	2.87	2.86	2.87							
175	3.03	2.91	2.87	2.92	2.88	2.95	3.07	2.89	2.96	2.89	2.91	2.89							
180	3.07	2.96	2.95	2.96	2.92	2.96	3.09	2.93	2.96	2.95	2.95	2.94							

C Range: 0 - 360DEG
 C Interval: 30.0DEG
 Test Speed: HIGH
 Temperature:25.3DEG
 Operators:WEIJIE
 Test Date:2023-12-11

γ Range: 0 - 180DEG
 γ Interval: 0.5DEG
 Test System:EVERFINE GO-2000A_V1 SYSTEM V2.00.446
 Humidity:65.0%
 Test Distance:8.600m [K=1.0000]
 Remarks: