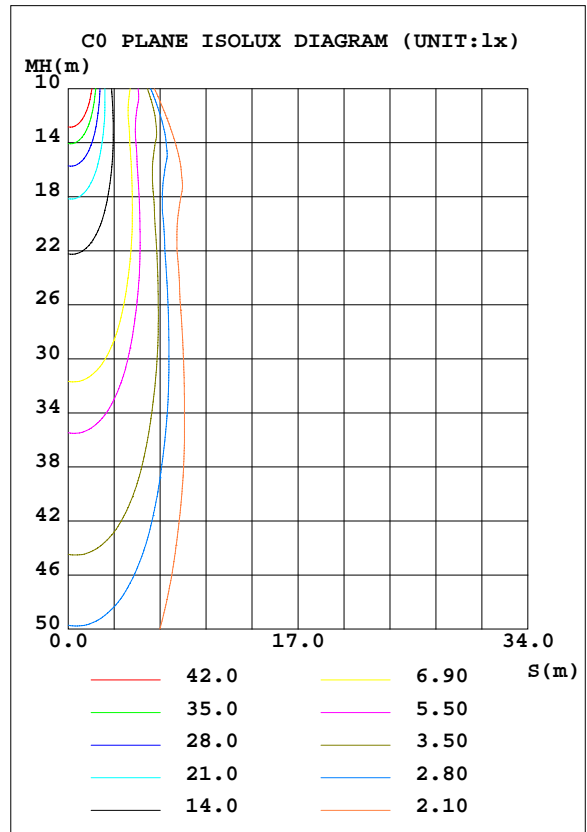
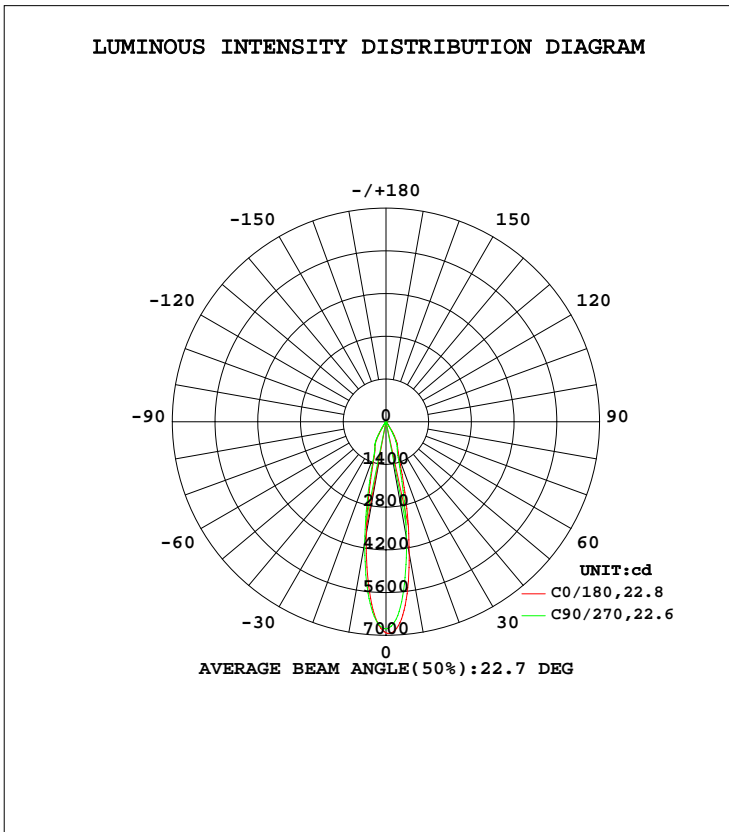


LUMINAIRE PHOTOMETRIC TEST REPORT

Test:U:219.99V I:0.0990A P:20.840W PF:0.9566 Freq:49.99Hz Lamp Flux:1661.14x1 lm		
NAME: MQT-LED0520C	TYPE: LED 4000K	WEIGHT: N/A
SPEC.: MQT-LED0520C	DIM.: 110*85MM	SERIAL No.: 5
MFR.:	SUR.: 0.085	Shielding Angle: N/A

DATA OF LAMP		PHOTOMETRIC DATA Eff: 79.71 lm/W			
MODEL	403H0412-2415MA 4000K	I _{max} (cd)	6936	S/MH(C0/180)	0.36
NOMINAL POWER(W)	20.84	LOR(%)	100.0	S/MH(C90/270)	0.39
RATED VOLTAGE(V)	220	TOTAL FLUX(lm)	1661.1	η UP, DN(C0-180)	0.2,49.3
NOMINAL FLUX(lm)	1661.14	CIE CLASS	DIRECT	η UP, DN(C180-360)	0.2,50.2
LAMPS INSIDE	1	η up(%)	0.4	CIBSE SHR NOM	0.00
TEST VOLTAGE(V)	220.1	η down(%)	99.6	CIBSE SHR MAX	0.30



C Range: 0 - 360DEG
 C Interval: 30.0DEG
 Test Speed: HIGH
 Temperature:25.3DEG
 Operators:WEIJIE
 Test Date:2022-12-30

γ Range: 0 - 180DEG
 γ Interval: 0.5DEG
 Test System:EVERFINE GO-2000A_V1 SYSTEM V2.00.446
 Humidity:65.0%
 Test Distance:9.420m [K=1.0000]
 Remarks:

ZONAL FLUX DIAGRAM

ZONAL FLUX DIAGRAM:

γ	C0	C45	C90	C135	C180	C225	C270	C315	γ	Φ zone	Φ total	%lum, lamp
10	4384	4176	3856	3571	3731	3817	4019	4302	0- 10	504.2	504.2	30.4,30.4
20	1241	1186	1127	1062	1100	1105	1146	1210	10- 20	599.2	1103	66.4,66.4
30	578.8	515.3	469.2	426.9	471.6	498.4	554.1	590.8	20- 30	382.2	1486	89.4,89.4
40	50.96	51.02	48.25	44.05	45.28	48.20	52.22	52.49	30- 40	111.5	1597	96.1,96.1
50	24.35	24.52	23.71	21.79	22.77	23.80	25.03	24.60	40- 50	26.79	1624	97.8,97.8
60	14.43	14.22	13.72	13.45	14.68	15.23	15.63	14.79	50- 60	16.49	1640	98.7,98.7
70	6.347	5.977	5.289	4.897	5.578	6.180	6.745	6.774	60- 70	10.55	1651	99.4,99.4
80	1.060	0.9854	0.8902	0.8082	0.8221	0.8599	0.9549	0.9980	70- 80	2.379	1653	99.5,99.5
90	0.0317	0	0	0	0.0365	0	0.0002	0.0055	80- 90	0.4082	1654	99.6,99.6
100	0	0.0026	0.0001	0	0.0624	0	0	0	90-100	0.0042	1654	99.6,99.6
110	0	0.0182	0.0261	0.0182	0.0781	0.0157	0	0.0104	100-110	0.0114	1654	99.6,99.6
120	0.0104	0.0365	0.0731	0.0469	0.1096	0.0444	0.0155	0.0289	110-120	0.0273	1654	99.6,99.6
130	0.2857	0.3284	0.3864	0.3882	0.4492	0.3936	0.3123	0.3259	120-130	0.1395	1654	99.6,99.6
140	1.109	1.168	1.263	1.300	1.524	1.379	1.255	1.212	130-140	0.5681	1654	99.6,99.6
150	3.125	3.247	3.396	3.591	4.117	3.811	3.558	3.496	140-150	1.392	1656	99.7,99.7
160	6.477	6.576	7.003	6.789	7.545	7.153	7.212	6.978	150-160	2.384	1658	99.8,99.8
170	8.163	8.043	8.085	7.843	7.925	8.001	8.296	8.303	160-170	2.206	1660	100,100
180	7.616	7.157	7.152	7.097	7.611	7.149	7.084	7.097	170-180	0.7350	1661	100,100
DEG	LUMINOUS INTENSITY:cd									UNIT:lm		

Conical surface Flux(90deg): 1612.4 lm

%lum = 97.1%
 %lamp = 97.1%

Conical surface Flux(120deg): 1640.3 lm

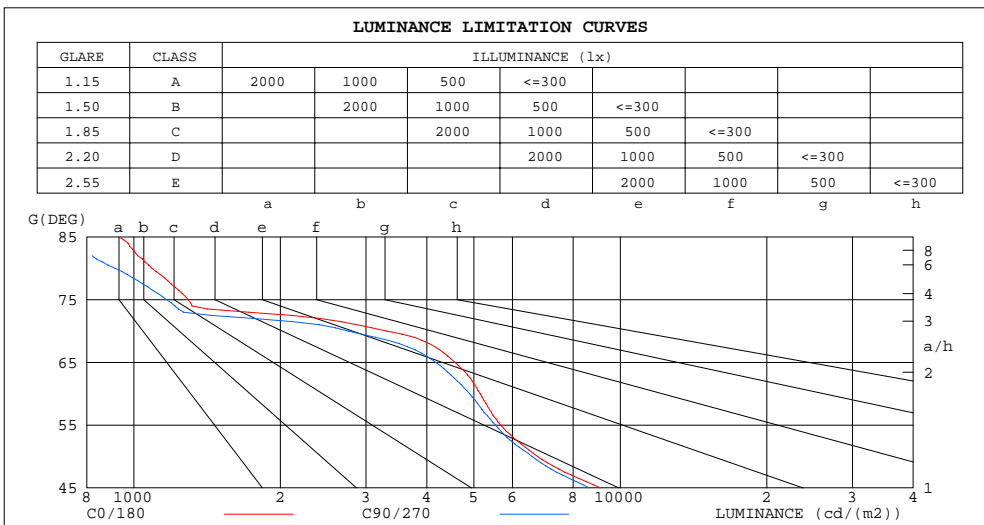
%lum = 98.7%
 %lamp = 98.7%

C Range: 0 - 360DEG
 C Interval: 30.0DEG
 Test Speed: HIGH
 Temperature:25.3DEG
 Operators:WEIJIE
 Test Date:2022-12-30

γ Range: 0 - 180DEG
 γ Interval: 0.5DEG
 Test System:EVERFINE GO-2000A_V1 SYSTEM V2.00.446
 Humidity:65.0%
 Test Distance:9.420m [K=1.0000]
 Remarks:

LUMINANCE LIMITATION CURVES

Test:U:219.99V I:0.0990A P:20.840W PF:0.9566 Freq:49.99Hz Lamp Flux:1661.14x1 lm		
NAME: MQT-LED0520C	TYPE: LED 4000K	WEIGHT: N/A
SPEC.: MQT-LED0520C	DIM.: 110*85MM	SERIAL No.: 5
MFR.:	SUR.: 0.085	Shielding Angle: N/A



LUMINANCE cd/(m2)		
G(DEG)	C0/180	C90/270
85	932	617
80	1090	915
75	1293	1168
70	3314	2761
65	4574	4174
60	5154	4901
55	5679	5545
50	6765	6587
45	9100	8641

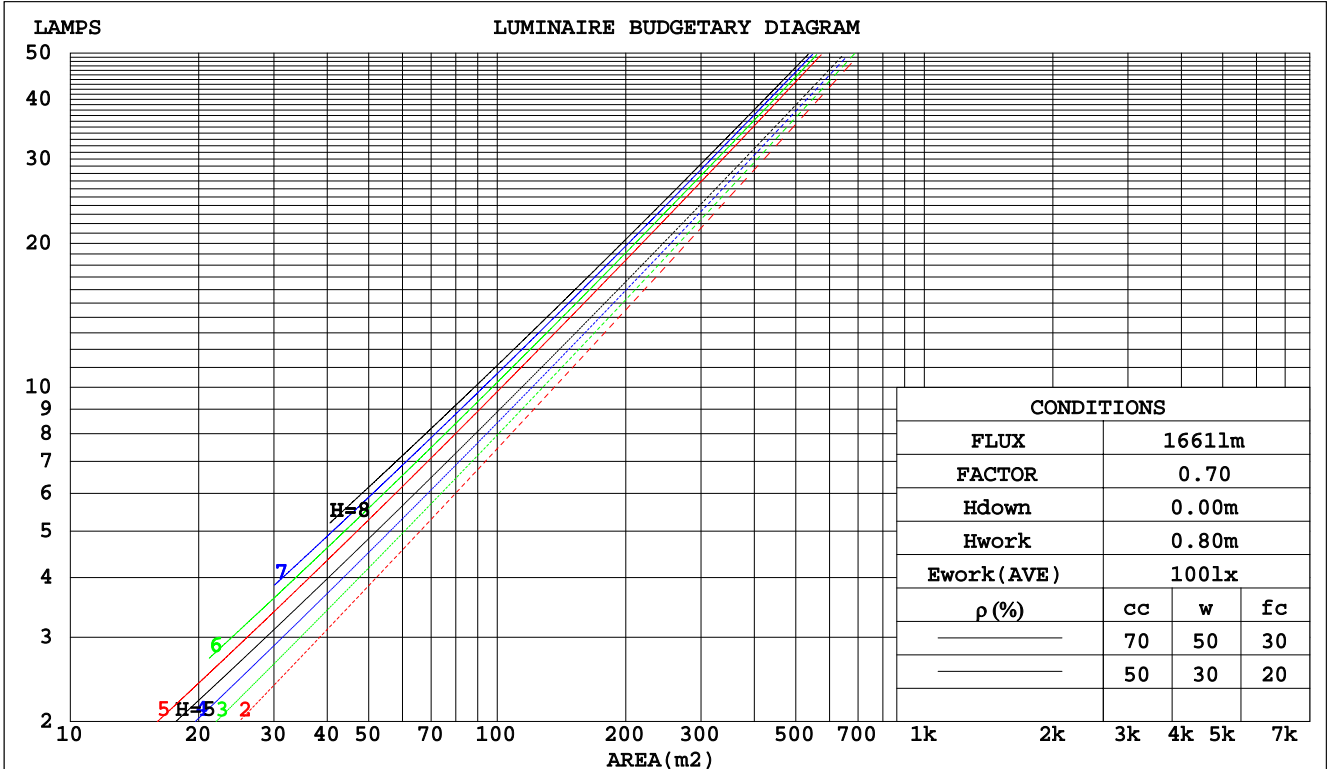
C Range: 0 - 360DEG
 C Interval: 30.0DEG
 Test Speed: HIGH
 Temperature: 25.3DEG
 Operators: WEIJIE
 Test Date: 2022-12-30

γ Range: 0 - 180DEG
 γ Interval: 0.5DEG
 Test System: EVERFINE GO-2000A_V1 SYSTEM V2.00.446
 Humidity: 65.0%
 Test Distance: 9.420m [K=1.0000]
 Remarks:

CU AND LUMINAIRE BUDGETARY ESTIMATE DIAGRAM

Test:U:219.99V I:0.0990A P:20.840W PF:0.9566 Freq:49.99Hz Lamp Flux:1661.14x1 lm		
NAME: MQT-LED0520C	TYPE: LED 4000K	WEIGHT: N/A
SPEC.: MQT-LED0520C	DIM.: 110*85MM	SERIAL No.: 5
MFR.:	SUR.: 0.085	Shielding Angle: N/A

pcc	80%			70%			50%			30%			10%			0
	50%	30%	10%	50%	30%	10%	50%	30%	10%	50%	30%	10%	50%	30%	10%	0
pw																0
pfc	20%			20%			20%			20%			20%			0
RCR	RCR:Room Cavity Ratio Coefficients of Utilization(CU)															
0.0	1.19	1.19	1.19	1.16	1.16	1.16	1.11	1.11	1.11	1.06	1.06	1.06	1.02	1.02	1.02	.00
1.0	1.12	1.10	1.08	1.10	1.08	1.06	1.06	1.04	1.03	1.02	1.01	.00	.99	.98	.97	.95
2.0	1.06	1.03	1.00	1.04	1.01	.99	1.01	.99	.97	.98	.96	.95	.96	.94	.93	.91
3.0	1.01	.97	.94	.00	.96	.93	.97	.94	.91	.95	.92	.90	.92	.90	.89	.87
4.0	.96	.92	.89	.95	.91	.88	.93	.90	.87	.91	.88	.86	.89	.87	.85	.84
5.0	.92	.88	.84	.91	.87	.84	.89	.86	.83	.88	.85	.82	.86	.84	.82	.80
6.0	.88	.84	.80	.88	.83	.80	.86	.82	.80	.85	.82	.79	.84	.81	.78	.77
7.0	.85	.80	.77	.84	.80	.77	.83	.79	.76	.82	.79	.76	.81	.78	.76	.74
8.0	.82	.77	.74	.81	.77	.74	.80	.76	.74	.79	.76	.73	.78	.75	.73	.72
9.0	.79	.74	.71	.79	.74	.71	.78	.74	.71	.77	.73	.71	.76	.73	.71	.69
10.0	.76	.72	.69	.76	.72	.69	.75	.71	.69	.75	.71	.68	.74	.71	.68	.67



C Range: 0 - 360DEG
 C Interval: 30.0DEG
 Test Speed: HIGH
 Temperature: 25.3DEG
 Operators: WEIJIE
 Test Date: 2022-12-30

γ Range: 0 - 180DEG
 γ Interval: 0.5DEG
 Test System: EVERFINE GO-2000A_V1 SYSTEM V2.00.446
 Humidity: 65.0%
 Test Distance: 9.420m [K=1.0000]
 Remarks:

WEC AND CCEC

Test:U:219.99V I:0.0990A P:20.840W PF:0.9566 Freq:49.99Hz Lamp Flux:1661.14x1 lm		
NAME: MQT-LED0520C	TYPE: LED 4000K	WEIGHT: N/A
SPEC.: MQT-LED0520C	DIM.: 110*85MM	SERIAL No.: 5
MFR.:	SUR.: 0.085	Shielding Angle: N/A

ρcc	80%			70%			50%			30%			10%			0
ρw	50%	30%	10%	50%	30%	10%	50%	30%	10%	50%	30%	10%	50%	30%	10%	0
ρfc	20%			20%			20%			20%			20%			0
RCR	RCR:Room Cavity Ratio						Wall Exitance Coefficients(WEC)									
0.0																
1.0	.149	.085	.027	.143	.081	.026	.130	.075	.024	.118	.068	.022	.107	.062	.020	
2.0	.140	.077	.024	.134	.074	.023	.124	.069	.021	.114	.064	.020	.105	.059	.019	
3.0	.131	.070	.021	.127	.068	.020	.118	.064	.019	.109	.060	.018	.102	.056	.017	
4.0	.124	.064	.019	.120	.063	.018	.112	.059	.018	.105	.056	.017	.098	.053	.016	
5.0	.117	.059	.017	.113	.058	.017	.107	.056	.016	.101	.053	.016	.095	.051	.015	
6.0	.111	.055	.016	.108	.054	.016	.102	.052	.015	.097	.050	.015	.092	.048	.014	
7.0	.105	.052	.015	.103	.051	.015	.098	.049	.014	.093	.048	.014	.089	.046	.014	
8.0	.100	.049	.014	.098	.048	.014	.094	.047	.013	.090	.045	.013	.086	.044	.013	
9.0	.096	.046	.013	.094	.046	.013	.090	.044	.013	.086	.043	.012	.083	.042	.012	
10.0	.092	.044	.012	.090	.043	.012	.087	.042	.012	.083	.041	.012	.080	.040	.012	

ρcc	80%			70%			50%			30%			10%			0
ρw	50%	30%	10%	50%	30%	10%	50%	30%	10%	50%	30%	10%	50%	30%	10%	0
ρfc	20%			20%			20%			20%			20%			0
RCR	RCR:Room Cavity Ratio						Ceiling Cavity Exitance Coefficients(CCEC)									
0.0	.194	.194	.194	.166	.166	.166	.113	.113	.113	.065	.065	.065	.021	.021	.021	
1.0	.173	.161	.151	.148	.138	.130	.101	.095	.090	.058	.055	.052	.019	.018	.017	
2.0	.155	.136	.120	.133	.117	.104	.091	.081	.072	.053	.047	.042	.017	.015	.014	
3.0	.141	.117	.097	.121	.101	.084	.083	.070	.059	.048	.041	.035	.015	.013	.011	
4.0	.129	.102	.081	.111	.088	.070	.076	.061	.049	.044	.036	.029	.014	.012	.010	
5.0	.119	.090	.068	.103	.078	.059	.071	.054	.042	.041	.032	.025	.013	.010	.008	
6.0	.111	.080	.058	.095	.069	.050	.066	.048	.035	.038	.028	.021	.012	.009	.007	
7.0	.104	.072	.050	.089	.062	.043	.062	.044	.031	.036	.026	.018	.012	.008	.006	
8.0	.097	.065	.043	.084	.057	.038	.058	.040	.027	.034	.023	.016	.011	.008	.005	
9.0	.092	.060	.038	.079	.052	.033	.055	.036	.024	.032	.021	.014	.010	.007	.005	
10.0	.087	.055	.034	.075	.048	.029	.052	.034	.021	.030	.020	.012	.010	.007	.004	

C Range: 0 - 360DEG
 C Interval: 30.0DEG
 Test Speed: HIGH
 Temperature:25.3DEG
 Operators:WEIJIE
 Test Date:2022-12-30

γ Range: 0 - 180DEG
 γ Interval: 0.5DEG
 Test System:EVERFINE GO-2000A_V1 SYSTEM V2.00.446
 Humidity:65.0%
 Test Distance:9.420m [K=1.0000]
 Remarks:

UGR(Unified Glare Rating) Table

Test:U:219.99V I:0.0990A P:20.840W PF:0.9566 Freq:49.99Hz Lamp Flux:1661.14x1 lm		
NAME: MQT-LED0520C	TYPE: LED 4000K	WEIGHT: N/A
SPEC.: MQT-LED0520C	DIM.: 110*85MM	SERIAL No.: 5
MFR.:	SUR.: 0.085	Shielding Angle: N/A

ceiling/cavity	0.7	0.7	0.5	0.5	0.3	0.7	0.7	0.5	0.5	0.3
walls	0.5	0.3	0.5	0.3	0.3	0.5	0.3	0.5	0.3	0.3
working plane	0.2	0.2	0.2	0.2	0.2	0.2	0.2	0.2	0.2	0.2
Room dimensions	Viewed crosswise					Viewed endwise				
x = 2H y = 2H	14.1	14.9	14.3	15.0	15.2	12.8	13.5	13.0	13.7	13.9
3H	14.3	15.0	14.5	15.2	15.4	13.0	13.7	13.2	13.9	14.1
4H	14.2	14.9	14.5	15.1	15.3	12.9	13.6	13.2	13.8	14.0
6H	14.2	14.8	14.5	15.0	15.3	12.9	13.5	13.2	13.7	14.0
8H	14.1	14.7	14.4	15.0	15.2	12.8	13.4	13.1	13.7	13.9
12H	14.1	14.6	14.4	14.9	15.2	12.8	13.4	13.1	13.6	13.9
4H 2H	14.1	14.7	14.4	15.0	15.2	12.8	13.5	13.1	13.7	13.9
3H	14.3	14.8	14.6	15.1	15.4	13.1	13.6	13.4	13.9	14.2
4H	14.2	14.7	14.6	15.0	15.4	13.0	13.5	13.4	13.8	14.2
6H	14.2	14.6	14.5	14.9	15.3	13.0	13.4	13.3	13.8	14.1
8H	14.1	14.5	14.5	14.9	15.3	12.9	13.3	13.3	13.7	14.1
12H	14.1	14.5	14.5	14.8	15.2	12.9	13.3	13.3	13.6	14.0
8H 4H	14.1	14.5	14.5	14.9	15.3	12.9	13.3	13.3	13.7	14.1
6H	14.0	14.4	14.5	14.8	15.2	12.9	13.2	13.3	13.6	14.0
8H	14.0	14.3	14.4	14.7	15.2	12.8	13.1	13.3	13.5	14.0
12H	13.9	14.2	14.4	14.7	15.1	12.8	13.0	13.2	13.5	14.0
12H 4H	14.0	14.4	14.5	14.8	15.2	12.9	13.3	13.3	13.6	14.0
6H	14.0	14.3	14.4	14.7	15.2	12.8	13.1	13.3	13.5	14.0
8H	13.9	14.2	14.4	14.6	15.1	12.8	13.0	13.2	13.5	14.0
Variations with the observer position at spacings(CIE Pub.117):										
S = 1.0H	+ 1.2 / - 1.4					+ 0.9 / - 1.3				
1.5H	+ 2.1 / - 1.1					+ 1.5 / - 1.0				
2.0H	+ 1.6 / - 1.0					+ 1.5 / - 1.0				

CIE Pub.117, 1661 lm Total Lamp Luminous Flux Corrected (8log(F/F0) = 1.8)
Area: 0.0056 m2

C Range: 0 - 360DEG
C Interval: 30.0DEG
Test Speed: HIGH
Temperature:25.3DEG
Operators:WEIJIE
Test Date:2022-12-30

γ Range: 0 - 180DEG
γ Interval: 0.5DEG
Test System:EVERFINE GO-2000A_V1 SYSTEM V2.00.446
Humidity:65.0%
Test Distance:9.420m [K=1.0000]
Remarks:

UTILIZATION FACTORS TABLE

Test:U:219.99V I:0.0990A P:20.840W PF:0.9566 Freq:49.99Hz Lamp Flux:1661.14x1 lm		
NAME: MQT-LED0520C	TYPE: LED 4000K	WEIGHT: N/A
SPEC.: MQT-LED0520C	DIM.: 110*85MM	SERIAL No.: 5
MFR.:	SUR.: 0.085	Shielding Angle: N/A

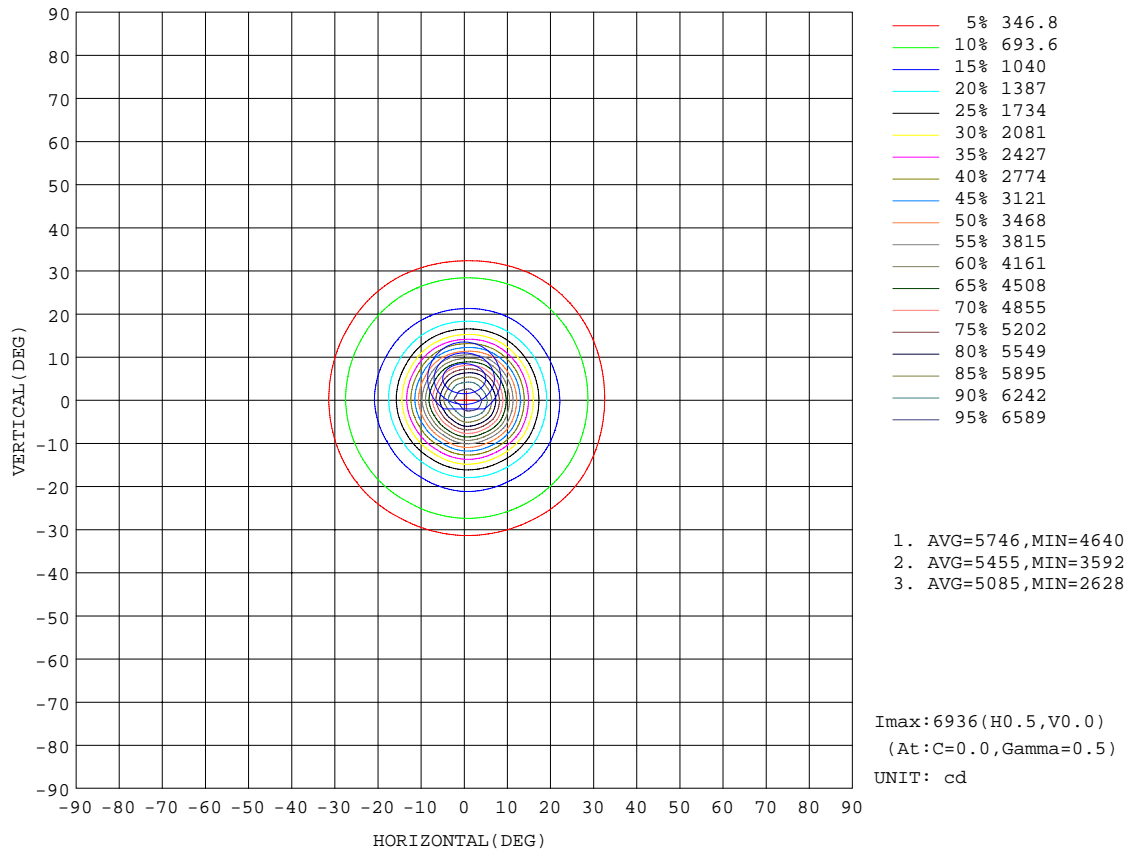
REFLECTANCE										
Ceiling	0.8	0.8	0.8	0.7	0.7	0.7	0.5	0.5	0.5	0
Walls	0.7	0.5	0.3	0.7	0.5	0.3	0.7	0.5	0.3	0
Working plane	0.2	0.2	0.2	0.2	0.2	0.2	0.2	0.2	0.2	0
ROOM INDEX	UTILIZATION FACTORS(PERCENT) k(RI) x RCR = 5									
k = 0.60	89	83	80	89	83	80	88	83	79	76
0.80	96	91	87	96	90	87	94	90	87	83
1.00	100	95	92	99	95	91	98	94	91	87
1.25	104	99	96	103	99	95	101	97	95	91
1.50	107	102	99	105	101	98	103	100	97	93
2.00	109	105	102	108	104	101	105	102	100	94
2.50	111	107	104	109	106	103	106	103	101	95
3.00	112	109	106	110	107	105	107	105	103	96
4.00	114	111	109	112	110	108	108	107	105	98
5.00	115	113	111	113	111	110	109	108	107	99
ROOM INDEX	UF(total)									Direct
According to DIN EN 13032-2 2004			Suspended				SHRNOM = 1.25			

C Range: 0 - 360DEG
 C Interval: 30.0DEG
 Test Speed: HIGH
 Temperature:25.3DEG
 Operators:WEIJIE
 Test Date:2022-12-30

γ Range: 0 - 180DEG
 γ Interval: 0.5DEG
 Test System:EVERFINE GO-2000A_V1 SYSTEM V2.00.446
 Humidity:65.0%
 Test Distance:9.420m [K=1.0000]
 Remarks:

ISOCANDELA DIAGRAM

Test:U:219.99V I:0.0990A P:20.840W PF:0.9566 Freq:49.99Hz Lamp Flux:1661.14x1 lm		
NAME: MQT-LED0520C	TYPE: LED 4000K	WEIGHT: N/A
SPEC.: MQT-LED0520C	DIM.: 110*85MM	SERIAL No.: 5
MFR.:	SUR.: 0.085	Shielding Angle: N/A

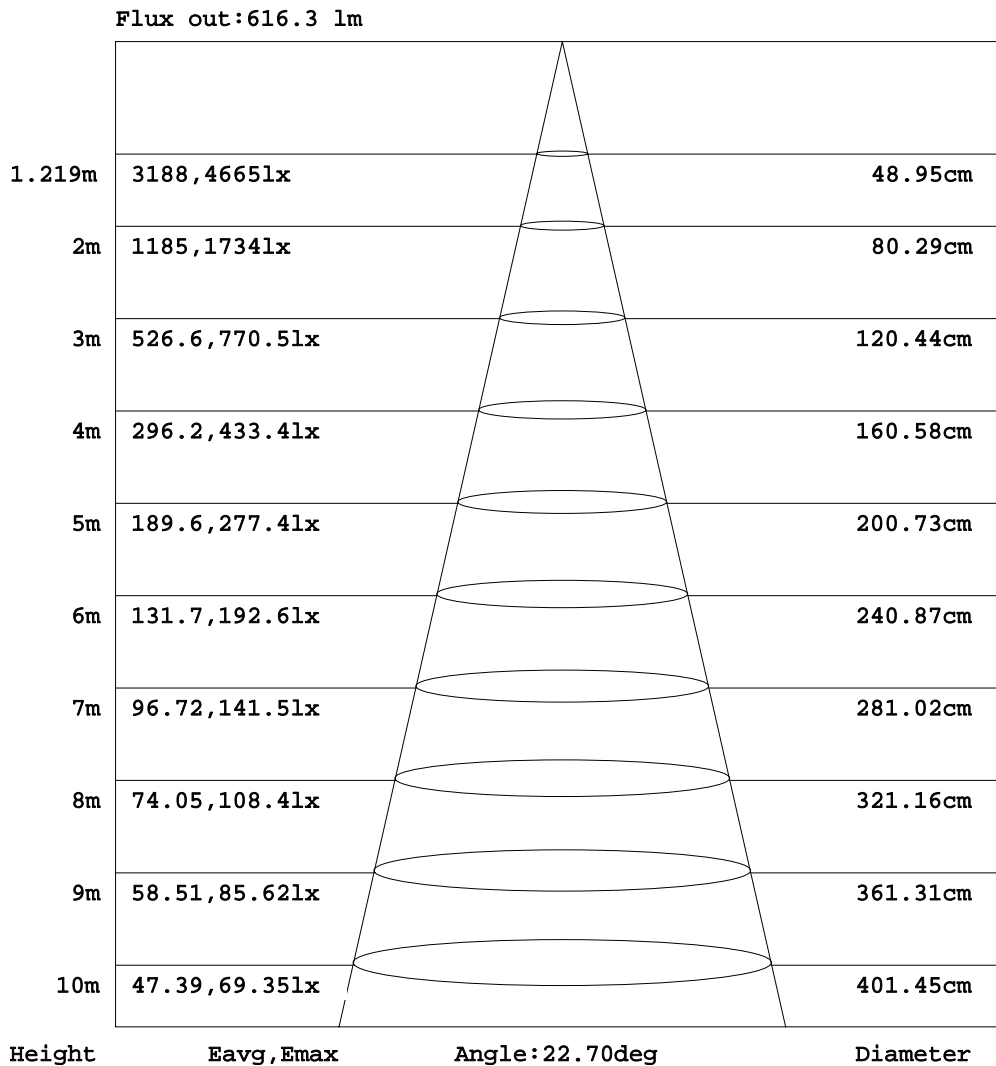


C Range: 0 - 360DEG
C Interval: 30.0DEG
Test Speed: HIGH
Temperature:25.3DEG
Operators:WEIJIE
Test Date:2022-12-30

γ Range: 0 - 180DEG
γ Interval: 0.5DEG
Test System:EVERFINE GO-2000A_V1 SYSTEM V2.00.446
Humidity:65.0%
Test Distance:9.420m [K=1.0000]
Remarks:

AAI Figure

Test:U:219.99V I:0.0990A P:20.840W PF:0.9566 Freq:49.99Hz Lamp Flux:1661.14x1 lm		
NAME: MQT-LED0520C	TYPE: LED 4000K	WEIGHT: N/A
SPEC.: MQT-LED0520C	DIM.: 110*85MM	SERIAL No.: 5
MFR.:	SUR.: 0.085	Shielding Angle: N/A



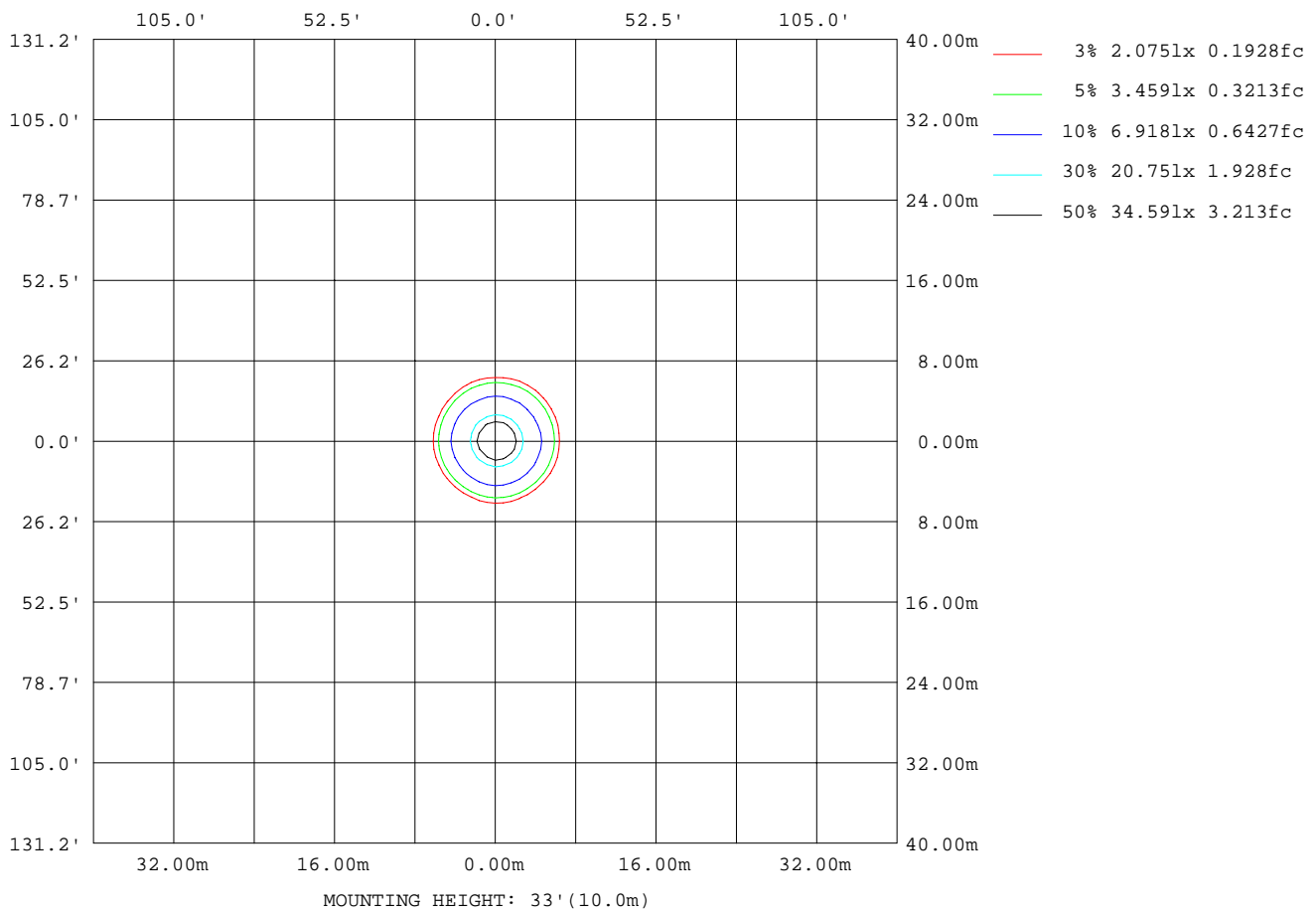
Note:The Curves indicate the illuminated area and the average illumination when the luminaire is at different distance.

C Range: 0 - 360DEG
 C Interval: 30.0DEG
 Test Speed: HIGH
 Temperature:25.3DEG
 Operators:WEIJIE
 Test Date:2022-12-30

γ Range: 0 - 180DEG
 γ Interval: 0.5DEG
 Test System:EVERFINE GO-2000A_V1 SYSTEM V2.00.446
 Humidity:65.0%
 Test Distance:9.420m [K=1.0000]
 Remarks:

ISOLUX DIAGRAM

Test:U:219.99V I:0.0990A P:20.840W PF:0.9566 Freq:49.99Hz Lamp Flux:1661.14x1 lm		
NAME: MQT-LED0520C	TYPE: LED 4000K	WEIGHT: N/A
SPEC.: MQT-LED0520C	DIM.: 110*85MM	SERIAL No.: 5
MFR.:	SUR.: 0.085	Shielding Angle: N/A



C Range: 0 - 360DEG
 C Interval: 30.0DEG
 Test Speed: HIGH
 Temperature:25.3DEG
 Operators:WEIJIE
 Test Date:2022-12-30

γ Range: 0 - 180DEG
 γ Interval: 0.5DEG
 Test System:EVERFINE GO-2000A_V1 SYSTEM V2.00.446
 Humidity:65.0%
 Test Distance:9.420m [K=1.0000]
 Remarks:

LED Avg.L Report

Test:U:219.99V I:0.0990A P:20.840W PF:0.9566 Freq:49.99Hz Lamp Flux:1661.14x1 lm		
NAME: MQT-LED0520C	TYPE: LED 4000K	WEIGHT: N/A
SPEC.: MQT-LED0520C	DIM.: 110*85MM	SERIAL No.: 5
MFR.:	SUR.: 0.085	Shielding Angle: N/A

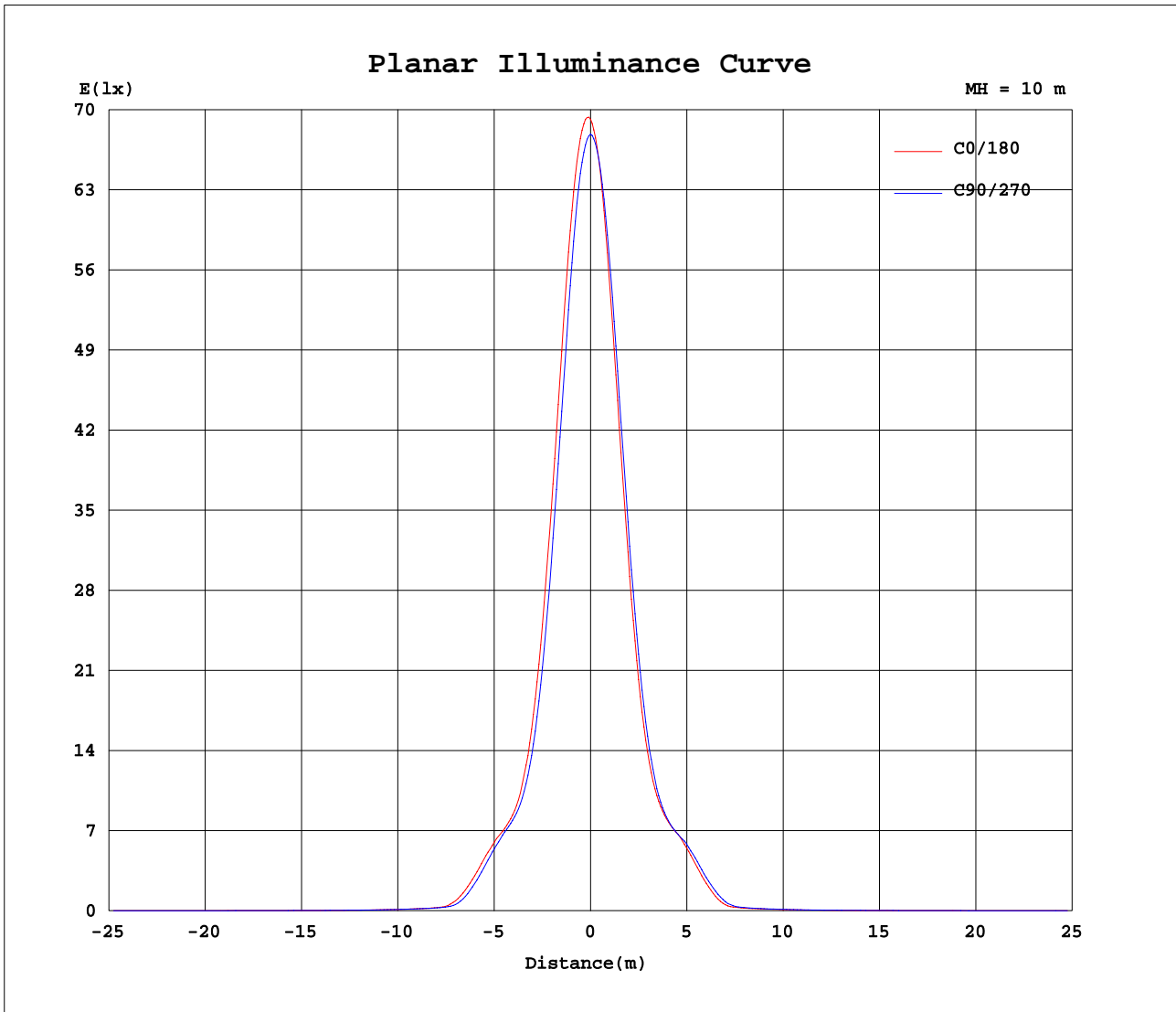
AvgL	cd/m2
L_0~180(65)av	4613
L_0~180(75)av	1208
L_0~180(85)av	758
L_90~270(65)av	4651
L_90~270(75)av	1176
L_90~270(85)av	700
L_45(65)av	4581
L_45(75)av	1164
L_45(85)av	682

Standard: GB/T 29293-2012

C Range: 0 - 360DEG
 C Interval: 30.0DEG
 Test Speed: HIGH
 Temperature:25.3DEG
 Operators:WEIJIE
 Test Date:2022-12-30

γ Range: 0 - 180DEG
 γ Interval: 0.5DEG
 Test System:EVERFINE GO-2000A_V1 SYSTEM V2.00.446
 Humidity:65.0%
 Test Distance:9.420m [K=1.0000]
 Remarks:

Planar Illuminance Curve



C Range: 0 - 360DEG
 C Interval: 30.0DEG
 Test Speed: HIGH
 Temperature: 25.3DEG
 Operators: WEIJIE
 Test Date: 2022-12-30

γ Range: 0 - 180DEG
 γ Interval: 0.5DEG
 Test System: EVERFINE GO-2000A_V1 SYSTEM V2.00.446
 Humidity: 65.0%
 Test Distance: 9.420m [K=1.0000]
 Remarks:

LUMINOUS DISTRIBUTION INTENSITY DATA

Test:U:219.99V I:0.0990A P:20.840W PF:0.9566 Freq:49.99Hz Lamp Flux:1661.14x1 lm		
NAME: MQT-LED0520C	TYPE: LED 4000K	WEIGHT: N/A
SPEC.: MQT-LED0520C	DIM.: 110*85MM	SERIAL No.: 5
MFR.:	SUR.: 0.085	Shielding Angle: N/A

Table--1

UNIT: cd

C(DEG) γ (DEG)	0	30	60	90	120	150	180	210	240	270	300	330							
0	6918	6856	6819	6787	6750	6743	6918	6856	6819	6787	6750	6743							
5	6354	6300	6046	5917	5672	5642	5815	5766	5916	5974	6147	6194							
10	4384	4346	4005	3856	3567	3575	3731	3709	3925	4019	4273	4332							
15	2391	2359	2127	2034	1861	1846	1926	1933	2055	2141	2311	2363							
20	1241	1221	1150	1127	1068	1056	1100	1089	1120	1146	1205	1215							
25	905	889	862	850	807	815	862	857	859	866	877	878							
30	579	544	486	469	418	436	472	473	524	554	591	590							
35	160	147	117	101	83.5	87.6	95.7	108	127	144	176	172							
40	51.0	52.0	50.0	48.3	44.4	43.7	45.3	46.3	50.1	52.2	54.1	50.8							
45	36.0	36.6	35.6	34.2	31.0	30.5	32.1	32.8	35.4	36.5	37.7	35.6							
50	24.4	24.7	24.3	23.7	21.9	21.7	22.8	23.2	24.4	25.0	25.5	23.7							
55	18.2	18.5	18.1	17.8	16.8	17.0	18.0	18.2	18.9	19.2	19.2	17.9							
60	14.4	14.4	14.0	13.7	13.3	13.6	14.7	14.9	15.5	15.6	15.2	14.4							
65	10.8	10.7	10.2	9.88	9.57	10.00	11.0	11.5	12.1	12.1	11.7	11.0							
70	6.35	6.32	5.63	5.29	4.84	4.96	5.58	5.81	6.55	6.75	7.04	6.50							
75	1.87	1.82	1.76	1.69	1.60	1.54	1.63	1.60	1.64	1.72	1.76	1.80							
80	1.06	1.00	0.97	0.89	0.84	0.78	0.82	0.85	0.87	0.95	0.97	1.02							
85	0.45	0.39	0.37	0.30	0.28	0.22	0.29	0.29	0.31	0.38	0.38	0.43							
90	0.03	0.00	0.00	0.00	0.00	0.00	0.04	0.00	0.00	0.00	0.00	0.01							
95	0.00	0.00	0.00	0.00	0.00	0.00	0.05	0.00	0.00	0.00	0.00	0.00							
100	0.00	0.01	0.00	0.00	0.00	0.00	0.06	0.00	0.00	0.00	0.00	0.00							
105	0.00	0.02	0.00	0.02	0.00	0.02	0.06	0.00	0.02	0.00	0.00	0.00							
110	0.00	0.04	0.00	0.03	0.00	0.04	0.08	0.00	0.03	0.00	0.02	0.00							
115	0.00	0.05	0.00	0.04	0.00	0.05	0.08	0.00	0.04	0.00	0.04	0.00							
120	0.01	0.06	0.01	0.07	0.03	0.07	0.11	0.02	0.07	0.02	0.06	0.00							
125	0.07	0.14	0.10	0.17	0.14	0.17	0.20	0.14	0.17	0.09	0.15	0.09							
130	0.29	0.34	0.31	0.39	0.37	0.41	0.45	0.40	0.39	0.31	0.34	0.31							
135	0.63	0.68	0.66	0.74	0.73	0.78	0.85	0.78	0.75	0.66	0.67	0.65							
140	1.11	1.17	1.17	1.26	1.28	1.32	1.52	1.44	1.32	1.25	1.22	1.20							
145	1.90	1.94	2.01	2.10	2.19	2.21	2.63	2.49	2.26	2.23	2.20	2.12							
150	3.12	3.18	3.31	3.40	3.62	3.56	4.12	4.00	3.62	3.56	3.53	3.46							
155	4.78	4.87	5.03	5.26	5.30	5.27	5.90	5.74	5.31	5.34	5.24	5.15							
160	6.48	6.50	6.65	7.00	6.84	6.74	7.55	7.27	7.04	7.21	7.11	6.84							
165	7.64	7.73	7.75	7.96	7.82	7.64	8.29	8.19	7.96	8.68	8.69	7.86							
170	8.16	8.04	8.05	8.08	7.99	7.70	7.93	8.29	7.71	8.30	8.70	7.91							
175	7.87	7.69	7.88	7.67	7.26	7.49	7.24	7.66	7.01	7.01	7.79	7.41							
180	7.62	7.33	6.98	7.15	7.17	7.03	7.61	7.29	7.01	7.08	7.18	7.02							

C Range: 0 - 360DEG
 C Interval: 30.0DEG
 Test Speed: HIGH
 Temperature:25.3DEG
 Operators:WEIJIE
 Test Date:2022-12-30

γ Range: 0 - 180DEG
 γ Interval: 0.5DEG
 Test System:EVERFINE GO-2000A_V1 SYSTEM V2.00.446
 Humidity:65.0%
 Test Distance:9.420m [K=1.0000]
 Remarks: